

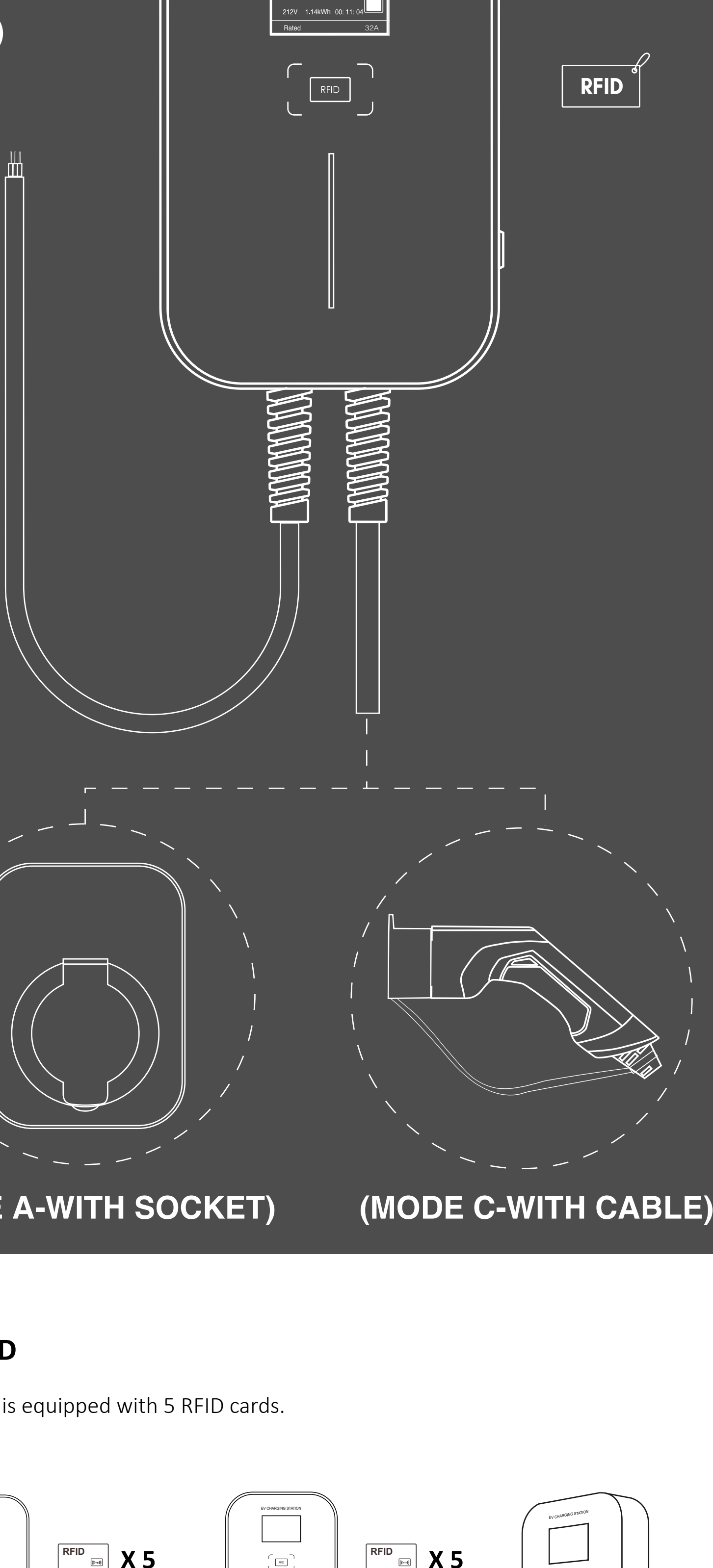
QUICK USER GUIDE

Wall-mounted charger

EV WALLBOX

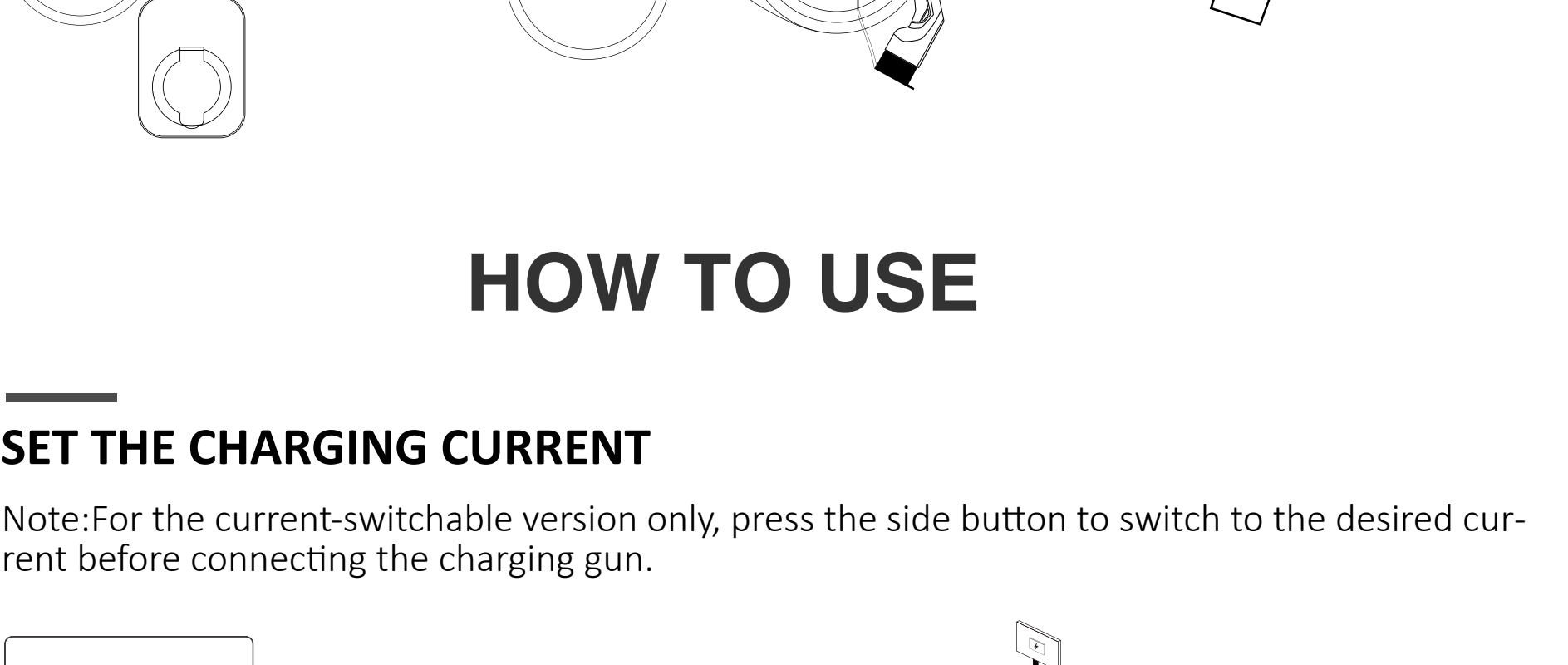
BS 20

RFID



RFID CARD

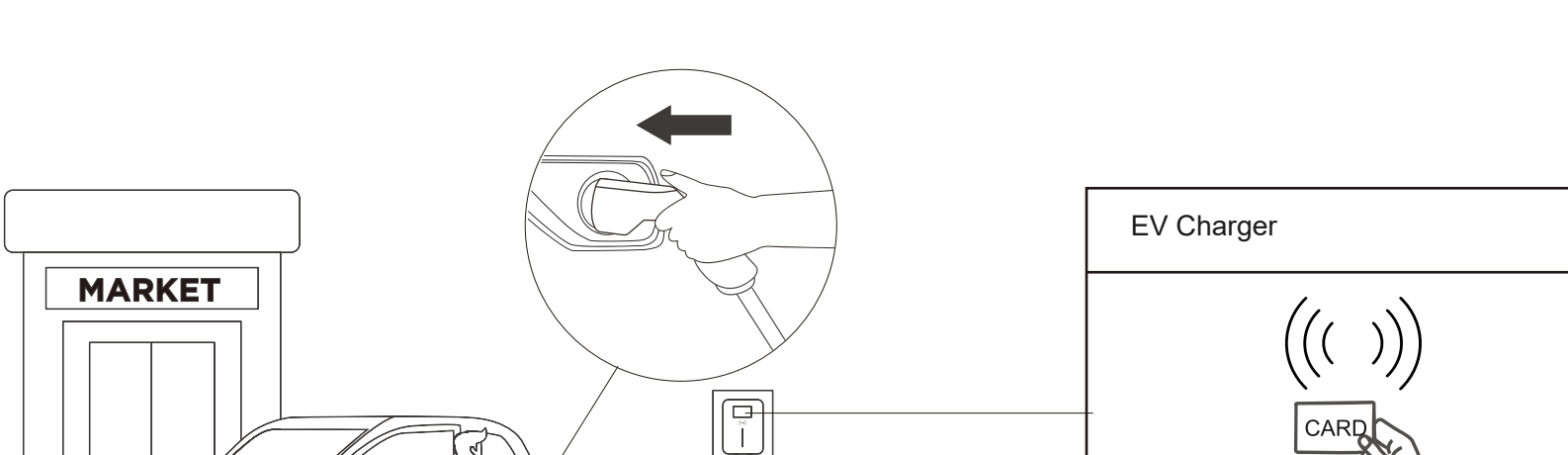
Each wallbox is equipped with 5 RFID cards.



HOW TO USE

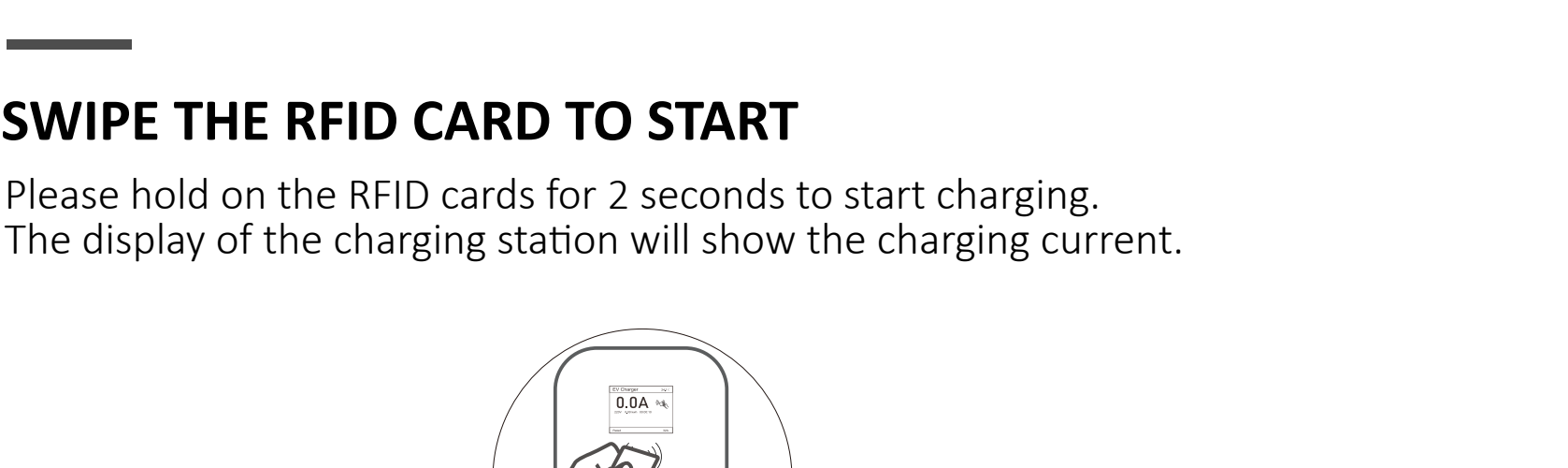
SET THE CHARGING CURRENT

Note: For the current-switchable version only, press the side button to switch to the desired current before connecting the charging gun.



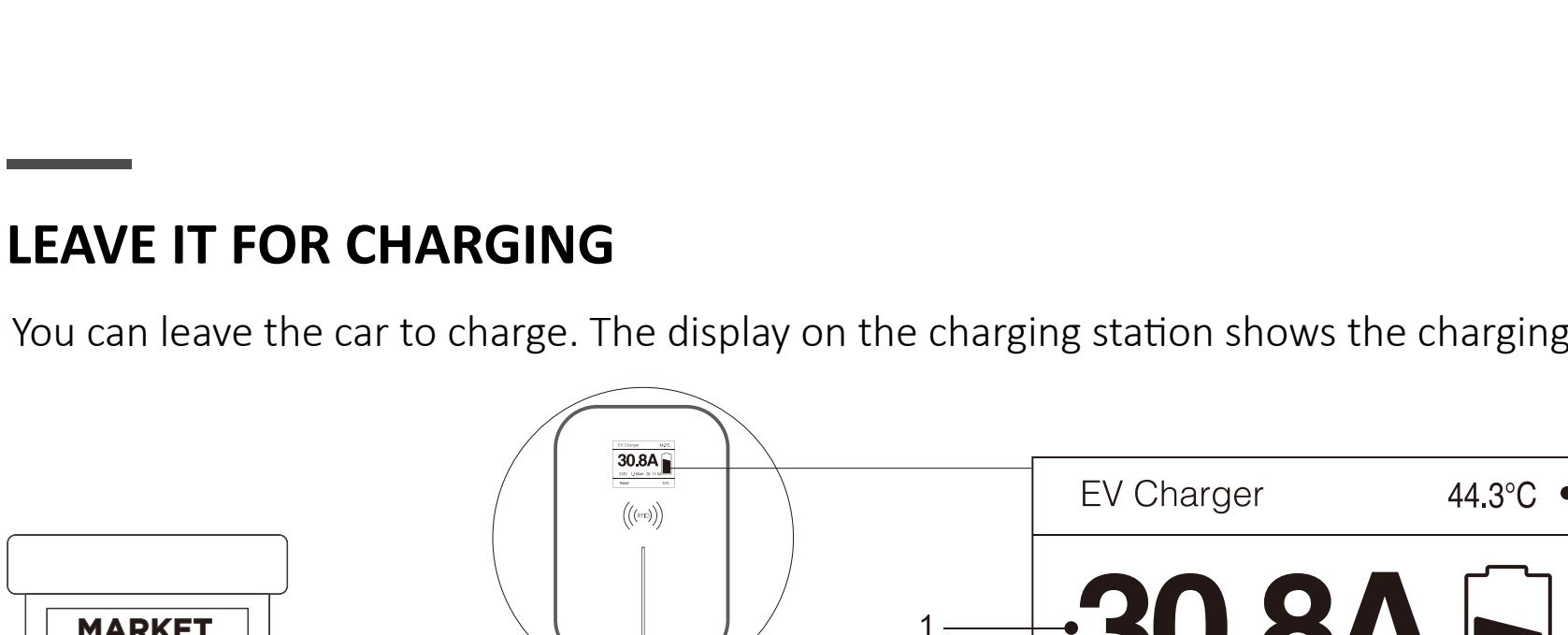
PLUG INTO THE CAR

After plugging in the car, the display on the charging station will show 'Start by charging card'.



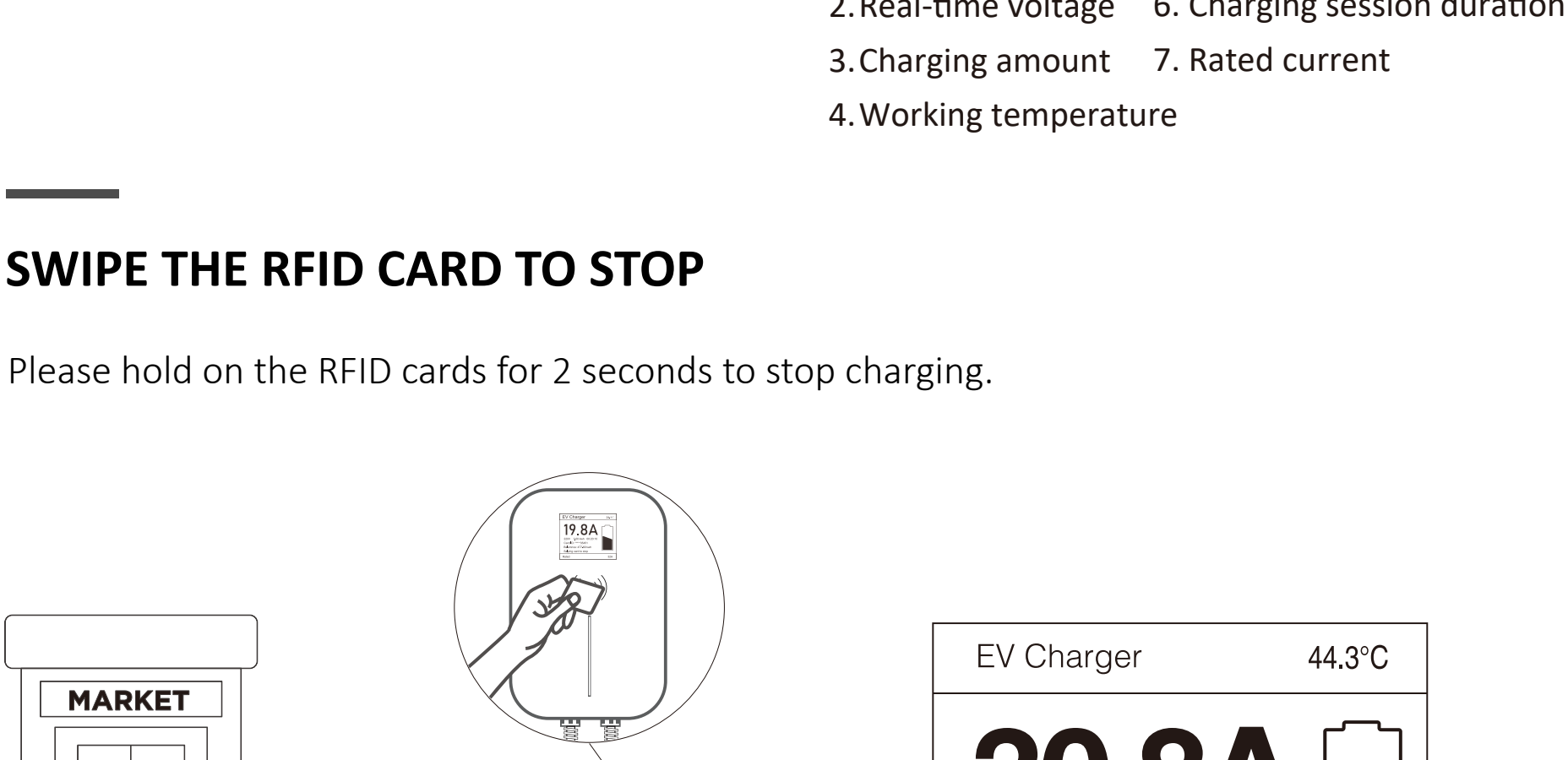
SWIPE THE RFID CARD TO START

Please hold on the RFID cards for 2 seconds to start charging. The display of the charging station will show the charging current.



LEAVE IT FOR CHARGING

You can leave the car to charge. The display on the charging station shows the charging data.



SWIPE THE RFID CARD TO STOP

Please hold on the RFID cards for 2 seconds to stop charging.

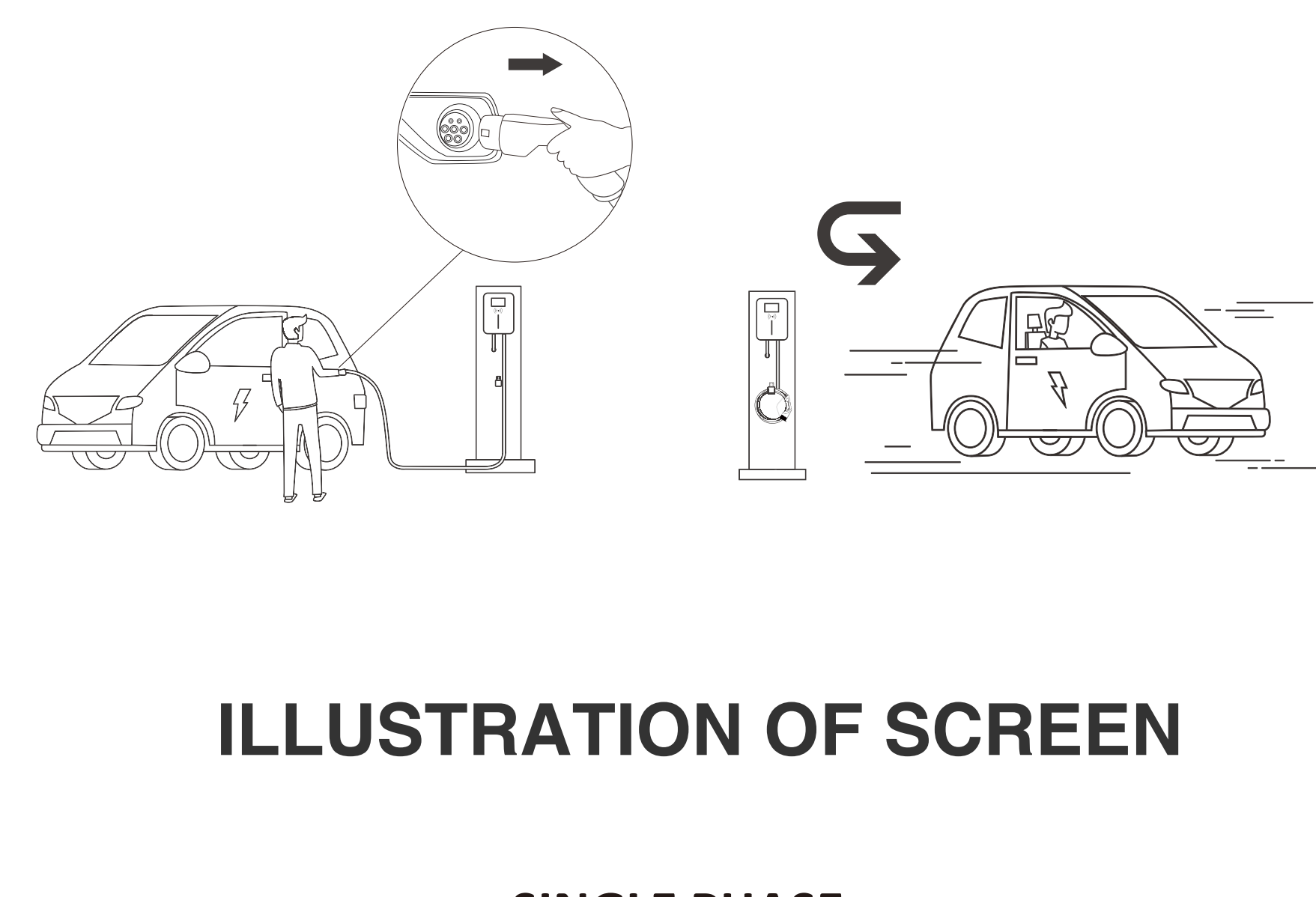
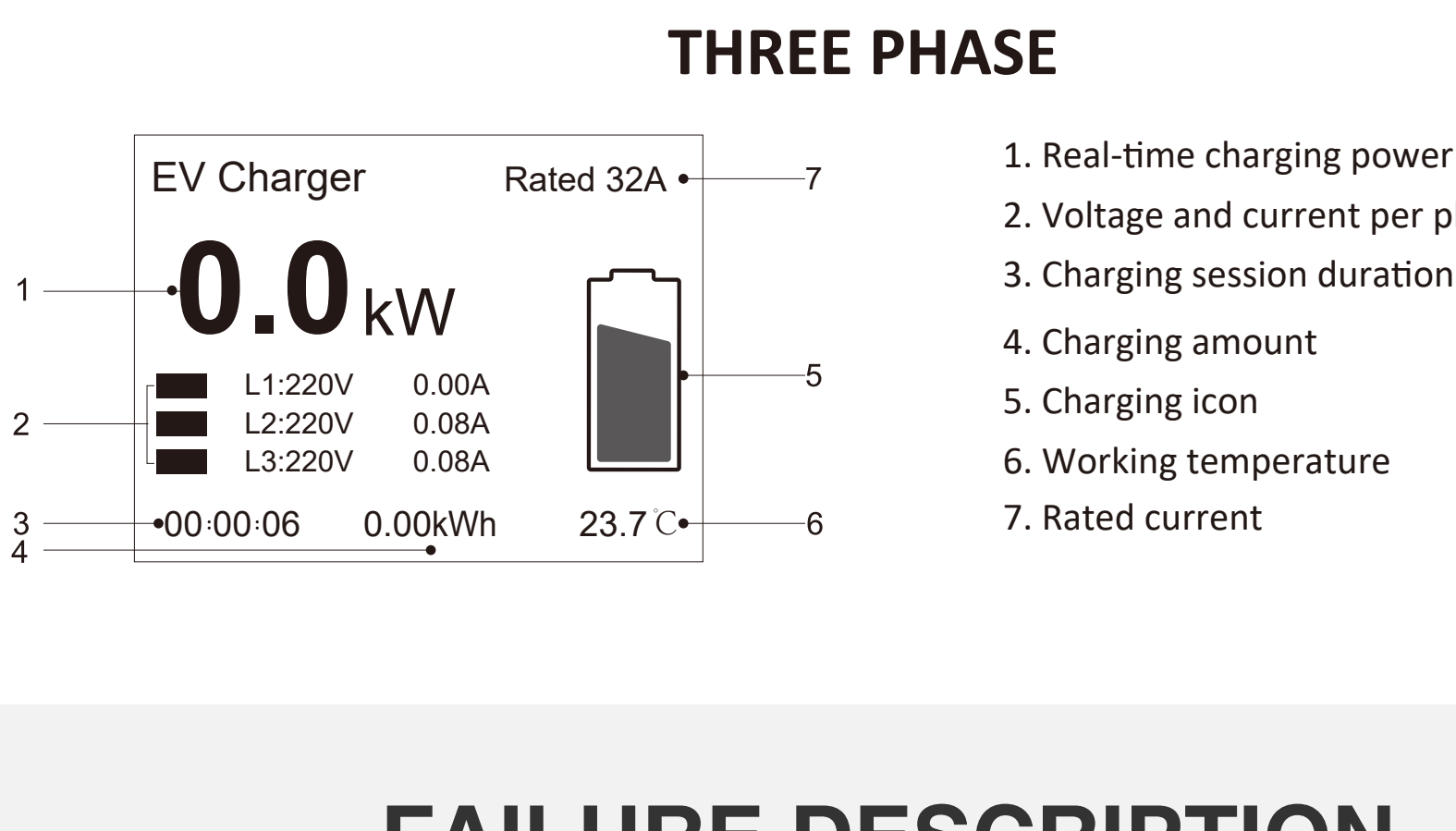


ILLUSTRATION OF SCREEN

SINGLE PHASE



THREE PHASE



FAILURE DESCRIPTION

<p>Leakage Protection</p> <ol style="list-style-type: none"> Check whether there are any foreign objects or water in the charging plug or vehicle socket. Unplug and reconnect. If the fault persists, please check the entire charging circuit before trying again. If the problem remains after multiple attempts, please stop using the charger and contact the after-sales personnel. 	<p>Over Current</p> <ol style="list-style-type: none"> Check the selected power. Try again with higher current and restart. If the above operation does not work, try to charge your vehicle with another AC charger. If your vehicle works well, please stop using the charger and contact the after-sales personnel.
<p>Short Circuit</p> <ol style="list-style-type: none"> Check the selected power. Try again with higher current and restart. If the above operation does not work, try to charge your vehicle with another AC charger. If your vehicle works well, please stop using this charger and contact the after-sales personnel. 	<p>Over Temperature</p> <ol style="list-style-type: none"> The current ambient temperature is too high, so the charger stops to keep you safe. Charging will restart automatically when the temperature returns to appropriate range.
<p>CP Error</p> <p>Communication error between the vehicle and charger has occurred.</p> <ol style="list-style-type: none"> Unplug and reconnect. Make sure the plug is completely inserted. If the above operation does not work, try to charge your vehicle with another AC charger. If your vehicle works well, please contact the after-sales personnel. 	

SECURITY WARNING

ATTENTION

Non-compliance with the operating instructions can cause serious consequences. Manufacturer does not assume any liability for damage caused by disregarding operating instructions or other warnings marked on the device. High voltage could result in fire hazards! Never use the device if the housing is damaged or opened! This product is not suitable for people with limited mobility, sensory or psychological disabilities, and those who lack use experience or a certain degree of knowledge.

IMPORTANT SAFETY INSTRUCTIONS WARNING!

- ▲ This product should only be installed, repaired or maintained by authorized electricians and in accordance with national guidelines for electrical installations. All applicable local, regional and national regulations for electrical installations must be respected.
- ▲ Regularly check the charger for visible damage. Do not use a damaged product.
- ▲ Make sure that all safety facilities and connections are available, properly installed and undamaged at all times and are tested regularly to ensure they can operate normally.
- ▲ Make sure that the input voltage, frequency, circuit breakers and other conditions of the device meet the specifications before the device is powered on. It's important to observe the maximum permissible charging current of the connection.
- ▲ Before powering on the device, please confirm that the device is properly grounded to avoid unnecessary accidents. If a ground fault occurs, it is assumed that the cable carries voltage. Please make sure there is no high-voltage power in the system before inspecting the device.
- ▲ Please insulate the unnecessarily exposed metal parts of all tools to prevent them from touching the metal frame, which may cause short circuit.
- ▲ To ensure the service life and stable operation of the charging station, the operating environment should be kept as clean as possible with a relatively stable temperature and humidity. The charging station must not be used in flammable environment or environments with volatile gas.
- ▲ Please keep the power cord away from the heated surface. Please do not put the power cord in the gap of the closed door or pull it out of sharp edges or corners.
- ▲ Do not use the charger when the inside of the charging plug is wet.
- ▲ Do not modify, retrofit, or change any part by yourself under any circumstances.
- ▲ Please do not use this product as a toy. Pls. take good care of children to ensure that they will not play with this device as a toy nor put fingers into the charging connector when the power plug is still connected.
- ▲ The circuit to which the charger is to be connected must be equipped with a residual current circuit breaker.

Note

Please do not use it for other purposes except electric car charging. Do not try to disassemble the device by yourself under any circumstances. Otherwise, the internal precision parts may be damaged, and you will not be able to apply for after-sales service.